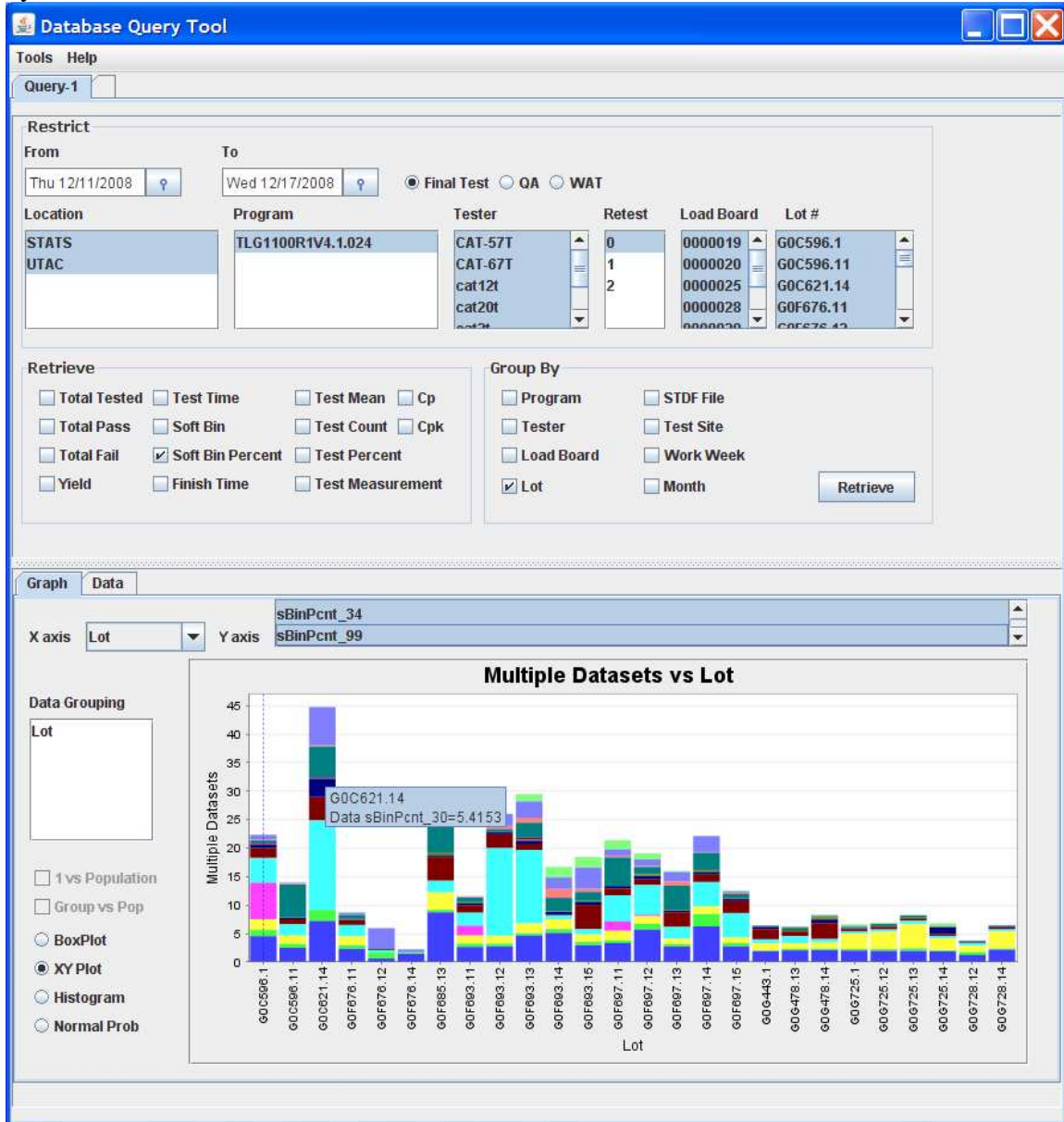


DB Viewer:

This tool is an ad-hoc query tool allowing quick easy access to all the test data in the database. It can quickly gather data and create graphs for millions of parts. Data can be grouped in different ways to easily find problems (i.e. graph series by test site, load board, test facility etc).

Intelligently decides what type of graph to create depending on data selected. This is a stacked softbin chart by lot number. Could also have been stacked softbin trend by work week if the work week checkbox had been selected instead.



Data table allows export to Excel, JMP, CSV. Also has correlation feature.

Database Query Tool

Tools Help

Query-1

Restrict

From: Thu 12/11/2008 To: Wed 12/17/2008 Final Test QA WAT

Location: STATS, UTAC Program: TLG1100R1V4.1.024 Tester: CAT-57T, CAT-67T, cat12t, cat20t Retest: 0, 1, 2 Load Board: 0000019, 0000020, 0000025, 0000028 Lot #: G0C596.1, G0C596.11, G0C621.14, G0F676.11

Retrieve

Total Tested Test Time Test Mean Cp
 Total Pass Soft Bin Test Count Cpk
 Total Fail Soft Bin Percent Test Percent
 Yield Finish Time Test Measurement

Group By

Program STDF File
 Tester Test Site
 Load Board Work Week
 Lot Month

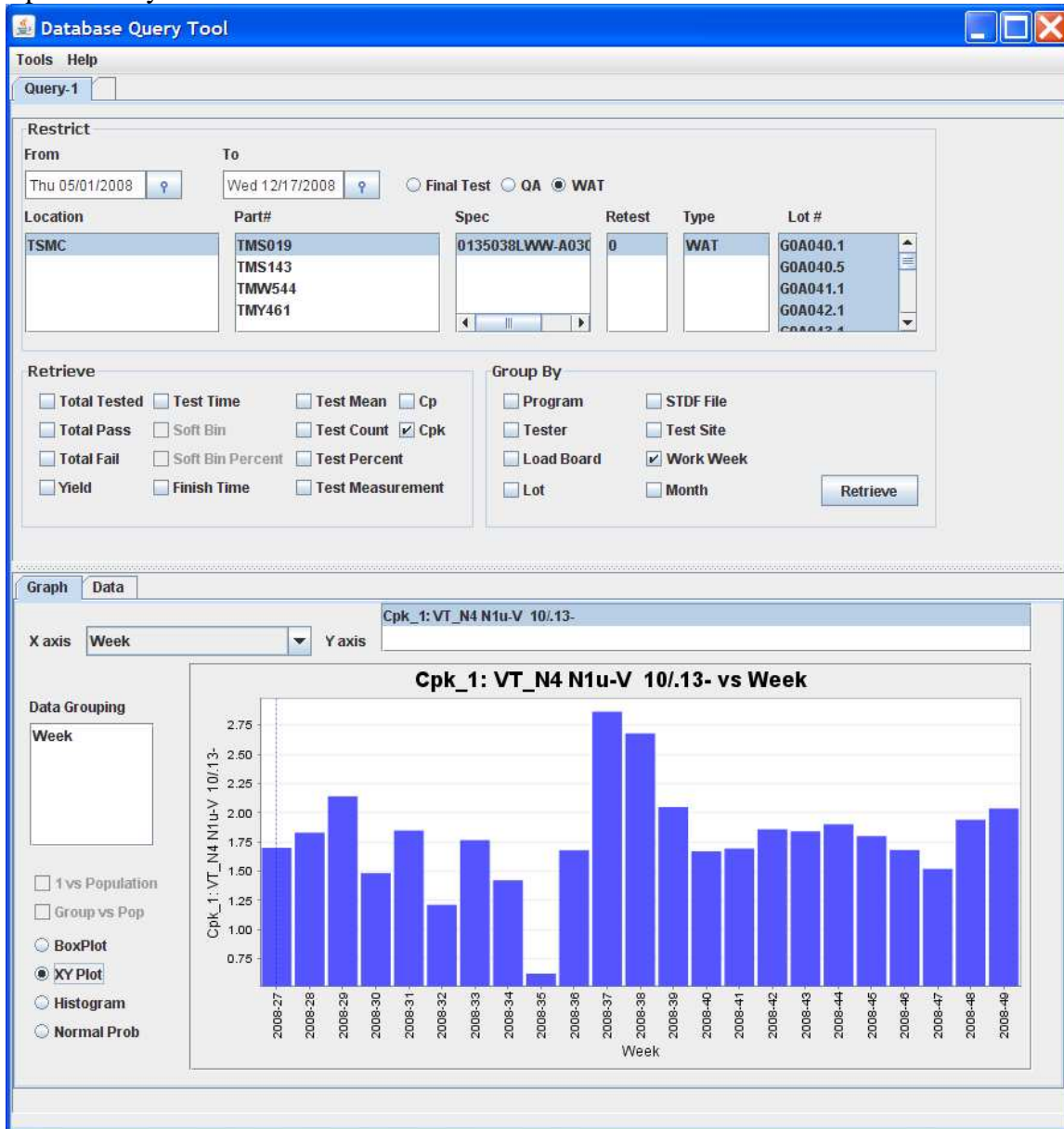
Retrieve

Graph Data

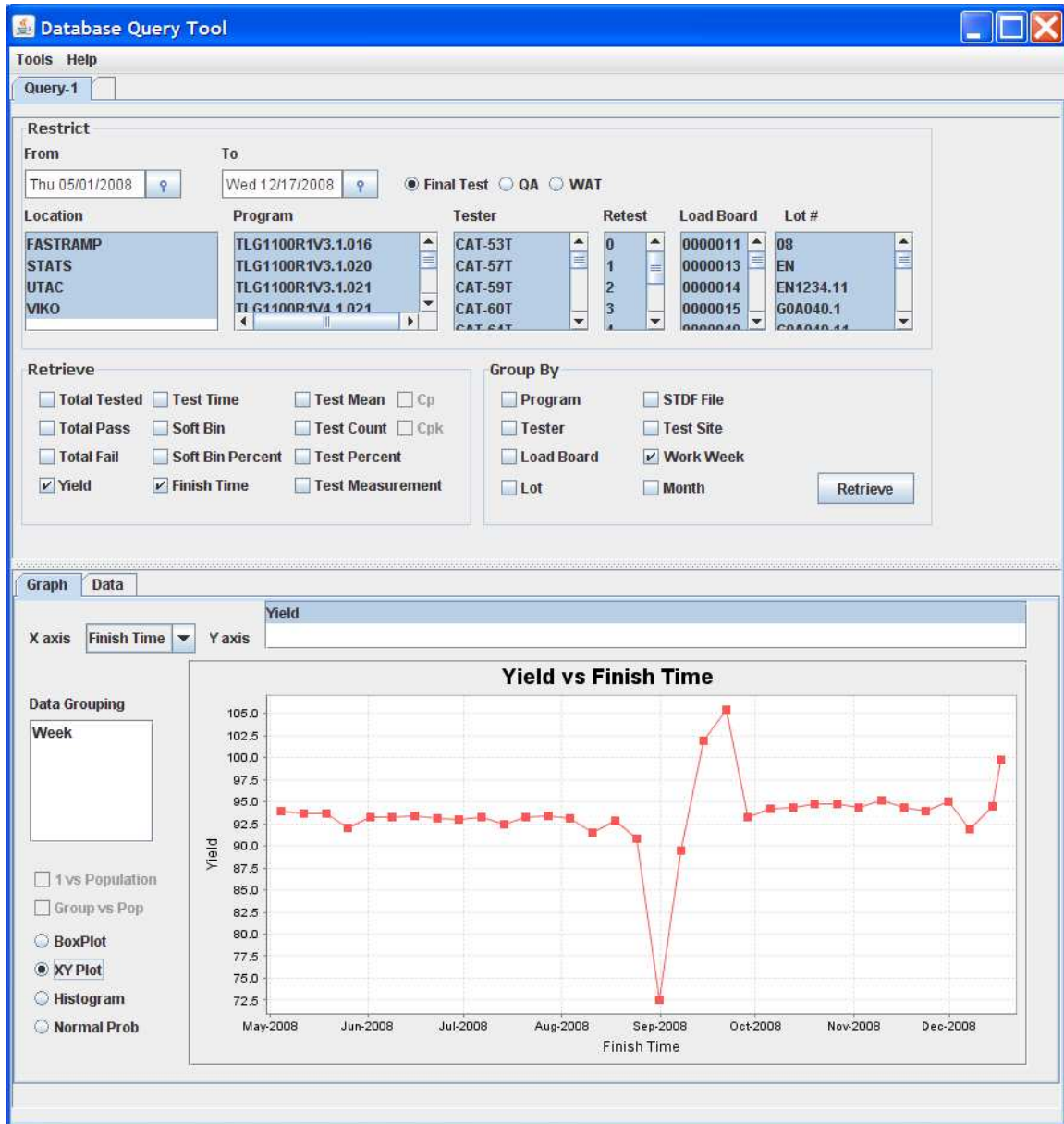
Save as CSV Correlation

sBinPcnt_2	sBinPcnt_5	sBinPcnt_6	sBinPcnt_7	sBinPcnt_10	sBinPcnt_11	sBinPcnt_12	sBinPcnt_13	sBinPcnt_14	sBinPcnt_20	sBinPcnt_21	sBinPcnt_21
4.5388	1.0680	1.9175	6.3835	4.2476	0.1214	1.7233	0.5340	0.0243	0.0243	0.2913	0.461
2.4885	0.6562	1.4981	0.0000	1.9562	0.0000	0.9162	0.2229	0.0248	0.0495	0.0000	5.794
7.2076	1.9464	0.0000	0.0000	15.6292	0.0964	4.0856	3.1798	0.0193	0.0578	0.1734	5.415
2.3213	0.6500	1.5320	0.0000	1.9963	0.0000	0.8821	0.0464	0.0464	0.0464	0.0464	0.603
0.6282	1.0128	0.0000	0.0000	0.3974	0.0000	0.2051	0.0000	0.0385	0.0128	0.0000	0.115
1.4523	0.1720	0.0000	0.0000	0.0955	0.0000	0.0191	0.0000	0.0000	0.0000	0.0000	0.076
8.7275	0.4494	3.0274	0.0000	2.0577	0.0237	4.1154	0.2129	0.2129	0.2602	0.0946	4.638
2.6563	0.5769	1.4063	1.7668	2.2476	0.0000	1.3101	0.3005	0.1683	0.0721	0.0000	0.805
2.7621	0.5044	1.3570	0.0000	15.3477	0.0240	2.4499	0.3483	0.0240	0.0600	0.0000	0.444
4.6632	0.4316	1.6783	0.0000	12.8986	0.0240	1.0309	0.5634	0.0719	0.1558	0.3596	2.565
5.1171	0.6667	1.7477	0.0000	0.6306	0.0180	0.1081	0.4865	0.0360	0.0541	0.0180	2.378
2.9793	0.6007	1.2734	0.0000	0.9130	0.0000	4.2528	0.5526	0.1682	0.0240	0.0000	1.537
3.3286	0.4836	1.6785	1.6501	4.5804	0.0000	1.1380	0.4836	0.0284	0.0284	0.0000	4.950
5.7032	0.9787	1.3654	0.2658	5.1716	0.0483	0.9546	0.6162	0.0725	0.2658	0.0846	1.160
2.7382	0.4016	0.9249	0.0000	2.1054	0.0000	2.5678	0.2799	0.0487	0.1095	0.0243	4.223
6.2635	2.1661	1.3357	0.0181	4.2599	0.0181	1.2635	0.4332	0.1444	0.1986	0.0361	3.014
2.7577	0.5877	0.9720	0.0000	4.2495	0.0226	2.1022	0.3843	0.0226	0.0452	0.0226	0.768
1.9170	0.1117	1.2656	0.0000	0.6886	0.0000	1.8239	0.3722	0.0558	0.0000	0.0372	0.111
2.0584	0.2628	0.9781	0.0000	1.2263	0.0146	0.8029	0.1752	0.3504	0.0438	0.0000	0.204
2.0976	0.2622	1.0634	0.0000	0.5827	0.0291	2.8114	0.6264	0.1020	0.3496	0.0000	0.131

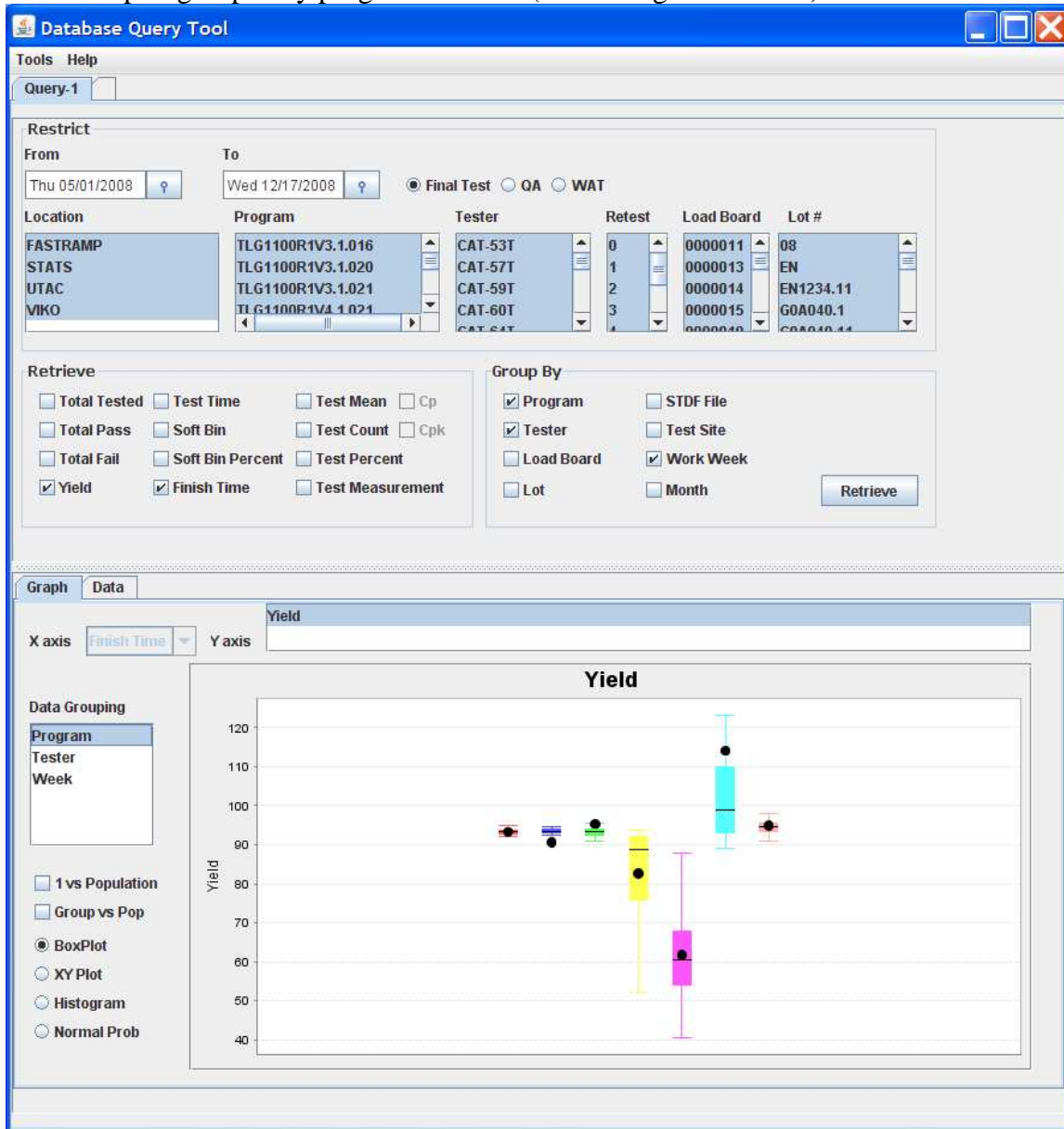
Cpk trend by work week:



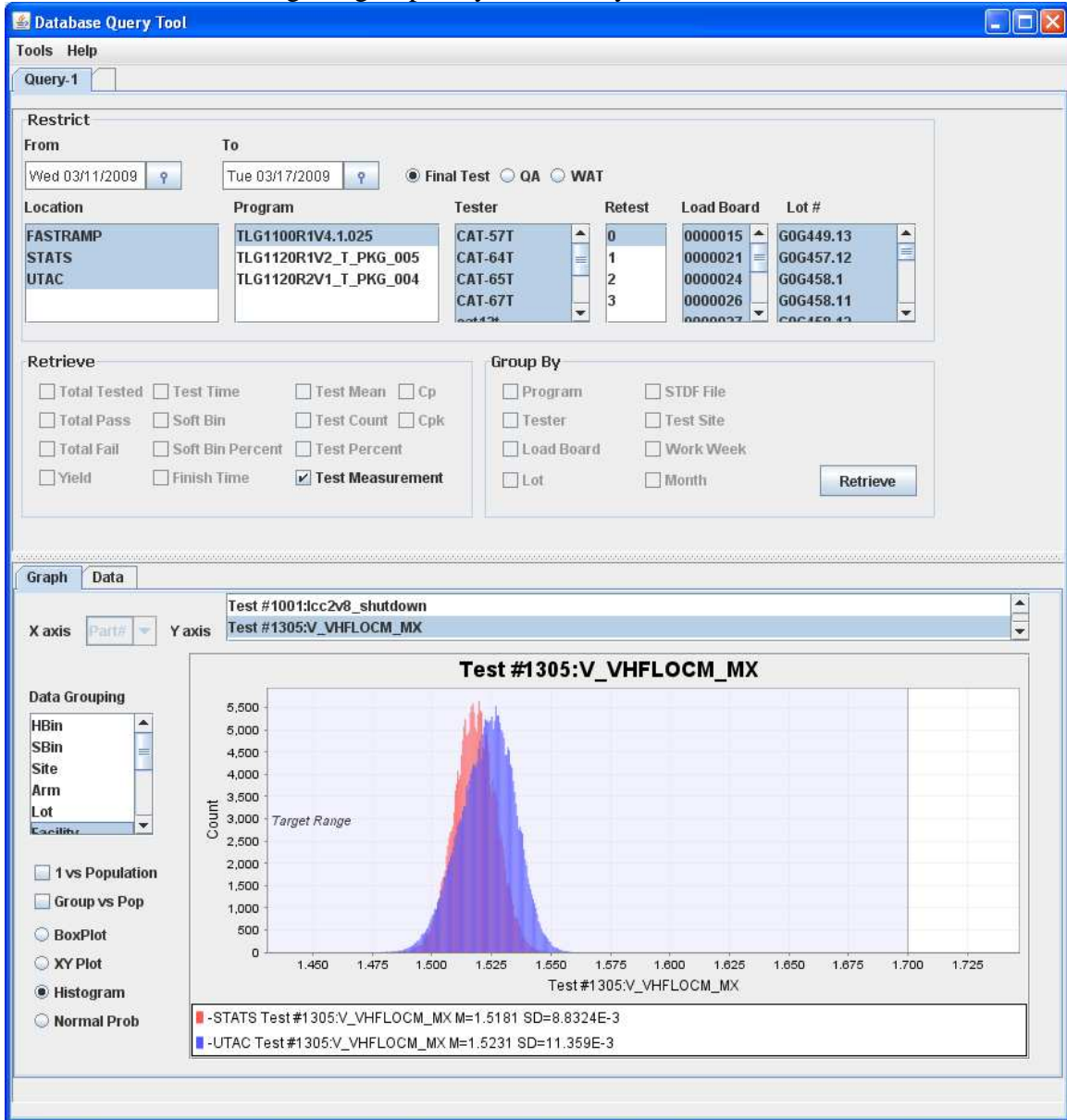
Yield trend



Yield boxplot grouped by program revision (bottom legends hidden)



Test measurement histogram grouped by test facility



Restrict

From: Wed 03/11/2009 To: Tue 03/17/2009 Final Test QA WAT

Location	Program	Tester	Retest	Load Board	Lot #
FASTRAMP	TLG1100R1V4.1.025	CAT-57T	0	0000015	G0G449.13
STATS	TLG1120R1V2_T_PKG_005	CAT-64T	1	0000021	G0G457.12
UTAC	TLG1120R2V1_T_PKG_004	CAT-65T	2	0000024	G0G458.1
		CAT-67T	3	0000026	G0G458.11

Retrieve

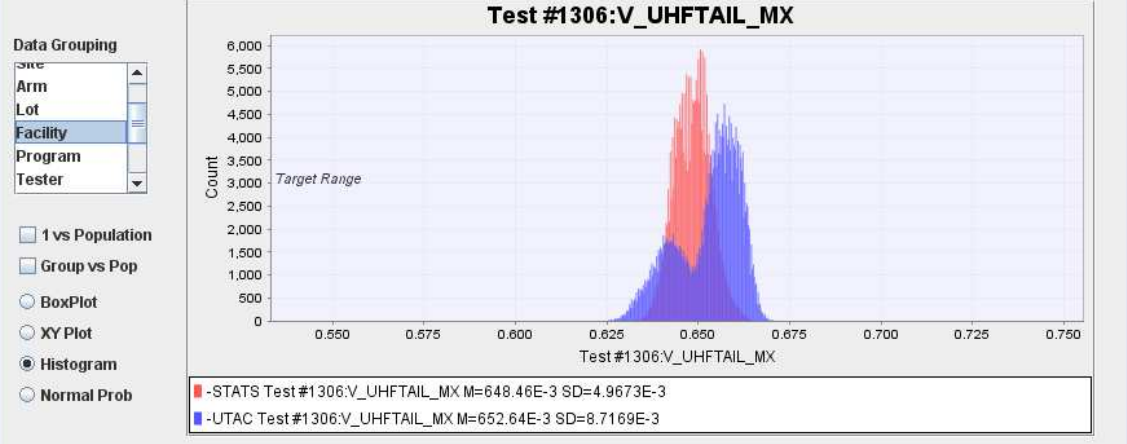
Total Tested Test Time Test Mean Cp
 Total Pass Soft Bin Test Count Cpk
 Total Fail Soft Bin Percent Test Percent
 Yield Finish Time Test Measurement

Group By

Program STDF File
 Tester Test Site
 Load Board Work Week
 Lot Month

Retrieve

X axis: Part# Y axis: Test #1306:V_UHFTAIL_MX

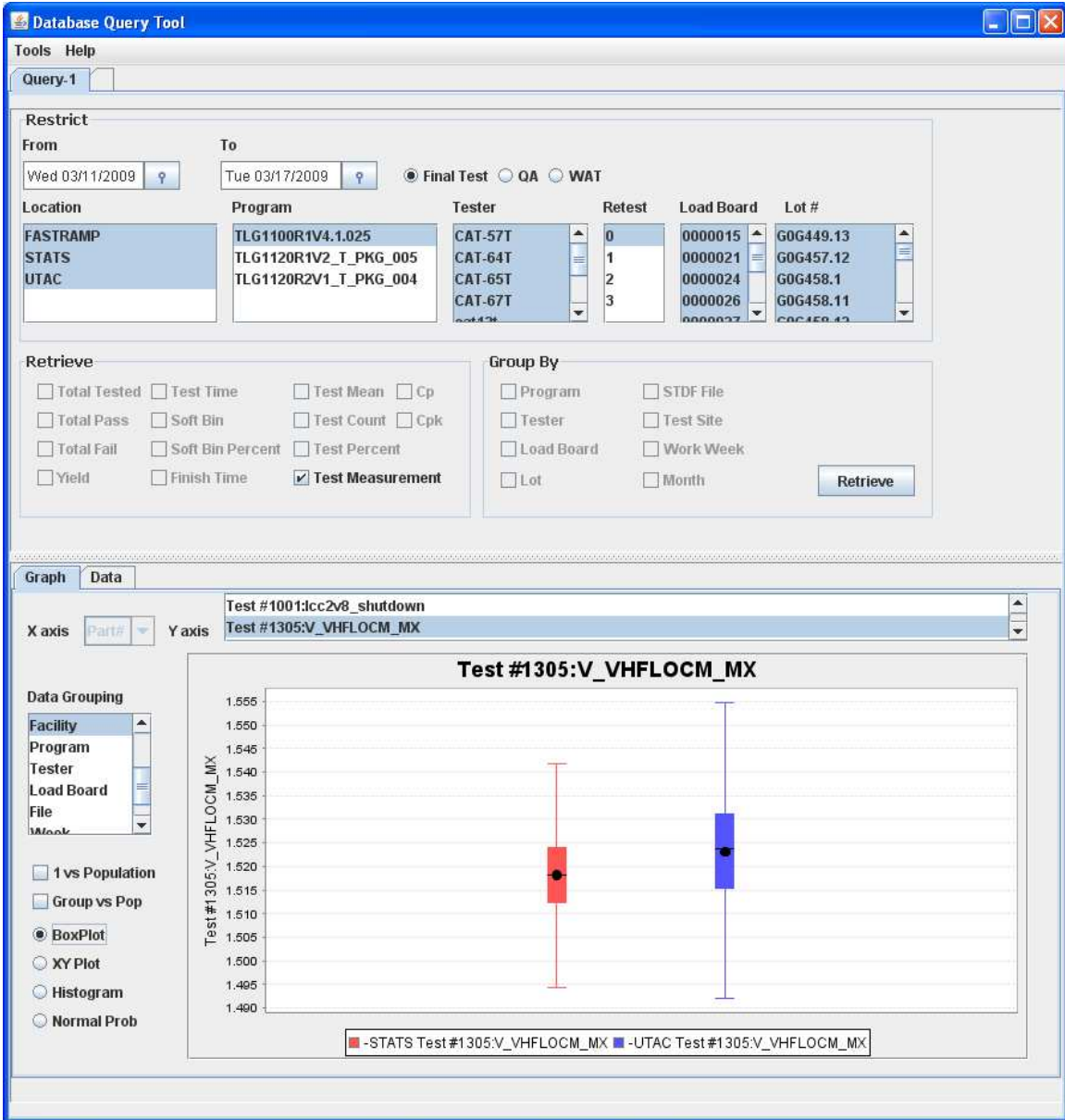


Data Grouping

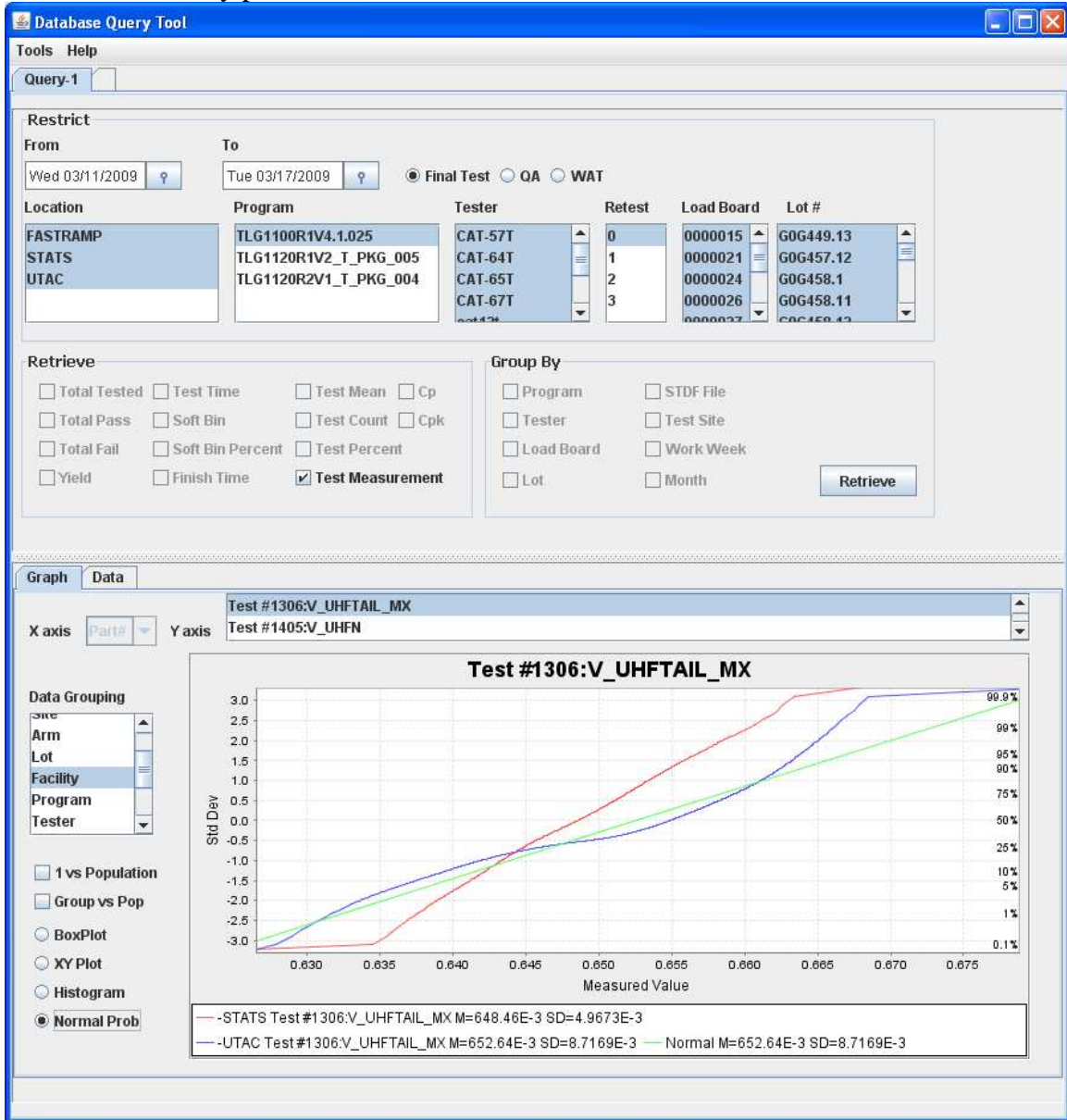
Site
 Arm
 Lot
 Facility
 Program
 Tester

1 vs Population
 Group vs Pop
 BoxPlot
 XY Plot
 Histogram
 Normal Prob

Box Plot



Normal Probability plot



Menu options for graph customization and data exclusion

Database Query Tool

Tools Help

Query-1

Restrict

From: Wed 03/11/2009 To: Tue 03/17/2009 Final Test QA WAT

Location	Program	Tester	Retest	Load Board	Lot #
FASTRAMP	TLG1100R1V4.1.025	CAT-57T	0	0000015	G0G449.13
STATS	TLG1120R1V2_I_PKG_005	CAT-64T	1	0000021	G0G457.12
UTAC	TLG1120R2V1_I_PKG_004	CAT-65T	2	0000024	G0G458.1
		CAT-67T	3	0000026	G0G458.11

Retrieve

Total Tested Test Time Test Mean Cp
 Total Pass Soft Bin Test Count Cpk
 Total Fail Soft Bin Percent Test Percent
 Yield Finish Time Test Measurement

Group By

Program STDF File
 Tester Test Site
 Load Board Work Week
 Lot Month

Retrieve

Graph Data

X axis: Part# Y axis: Test #1306:V_UHFTAIL_MX
 Test #1405:V_UHFN

Data Grouping

Site
 Arm
 Lot
 Facility
 Program
 Tester

1 vs Population
 Group vs Pop

BoxPlot
 XY Plot
 Histogram
 Normal Prob

Test #1306:V_UHFTAIL_MX

Count

Target Range

Part#

Exclude Data...

- Exclude None
- Exclude > 0.5800596998413698
- Exclude < 0.5800596998413698